

CEC 2012 – 1. and 2. round
Moravia CUP – 1. and 2. round

Instructions



Hodonín u Kunštátu 27.-29. 4. 2012



1. *Categories*

CEC – 1. and 2. round of Central European Cup 2012

MP – 1. and 2. round of Moravian Cup 2012

SCM – 1. round of Shell Cup division Moravia

4SS – especially will be awarded one driver with the best sum of four special stages (CEC and MP together)

2. *Date and venue*

27.-29.4.2012 Hodonín u Kunštátu

3. *Organized by*

BASK – Brněnský autosportklub

4. *Headquarters for the event*

1. director	Petr Dvorský
2. authors of tracks	Karin Šodková, Dušan Šejka, Petr Dvorský
3. umpire	Petr Dvorský
4. calculations of results	Aleš Šejka
5. referee of SS	Ondřej Čermák

5. *Schedule of Competition (CEC)*

Friday 27. 4	16:30 - 19:30	Nomination
	17:30 - 19:30	SS N1
	18:00 - 19:45	Dinner
	19:45	Opening ceremony and technical discussion
	20:30	SS N2 and start to night round
Saturday 28. 4	00:40	Expected arrival time of the last crew
	07:30 - 09:00	Breakfast
	08:30	Start to day round (2xSS in TC 2)
	14:00 - 16:30	Lunch
	20:30	Dinner and celebration ceremony
Sunday 29. 4	07:30 - 09:30	Breakfast

6. *Registration*

Registration should be sent to r.a.geo@email.cz

Registration Hodonín u Kunštátu 2012

category:

number:

driver:

navigator:

number of extra persons

navigator want to start in 4SS (yes/no):

number of Thursdays overnights

7. *Deposit (CEC)*

75 EUR/car with two persons

45 EUR/extra person

2 EUR/can start in MP, but please only crews who wish to attend some next round of MP

1 EUR/ navigator can start in 4SS, in this case the STEP (MP) is calculated on the first launch vehicle

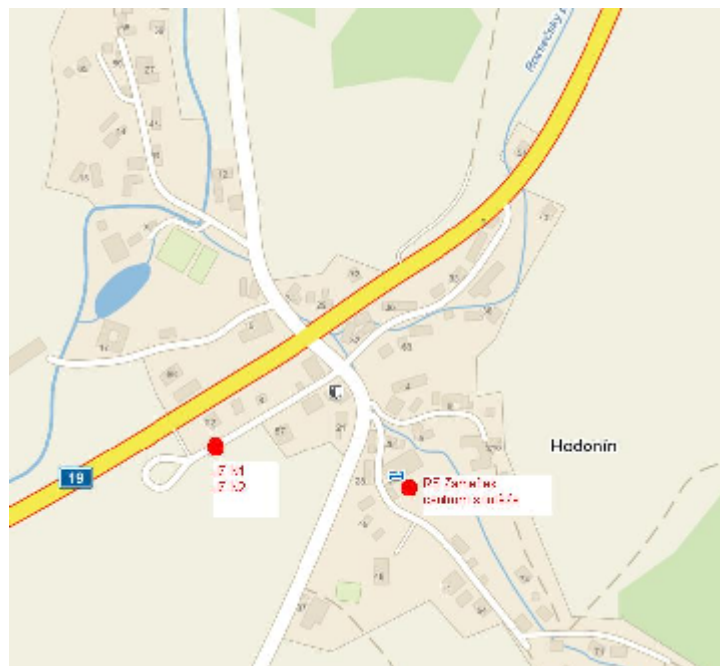
10 EUR/person in Thursday night including Friday breakfast, you can have other meals in motorest on highway (distance 400m, opposite of JZ)

The organizer asks for sending the registrations early, after 23.4 is no longer able to guarantee the ordered services.

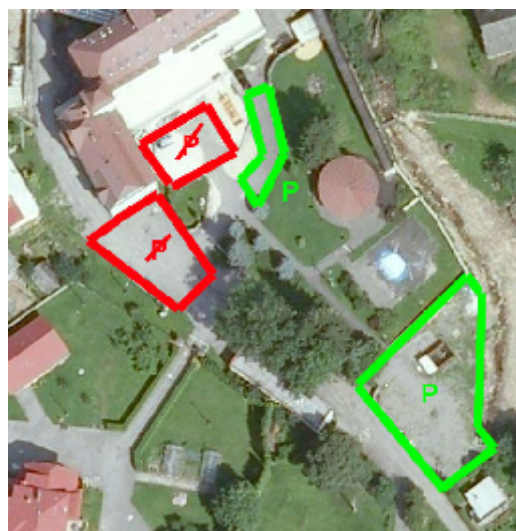
8. *Center of competition*

Is in RS Záme ek Hodonín (49°30'1.562"N, 16°24'38.963"E). There are all ceremonies, and meals.

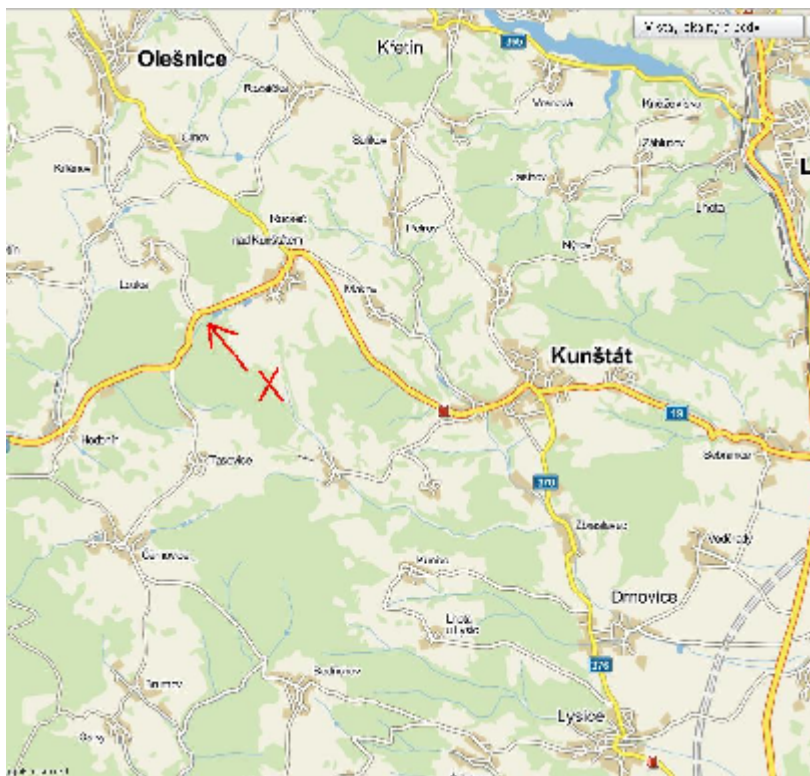
Night SS are shown on map (JZ N1, JZ N2).



Parking areas and parking bans in the center of the competition:



9. Area of competition



10. Entrance itinerary - checking gauges, from point X on the map up

						RS Zámeček
0.00 km	0.13 km	1.02 km	1.05 km	3.32 km	3.41 km	3.54 km

11. Refueling

Kunštát 06:00-21:00, Lysice 07:00 - 20:00, non-stop just on R43 in Letovice or ěrná Hora

12. Final provisions

The organizer reserves the right to supplement and clarify information contained in propositions. Changes will be announced at last in opening ceremony.